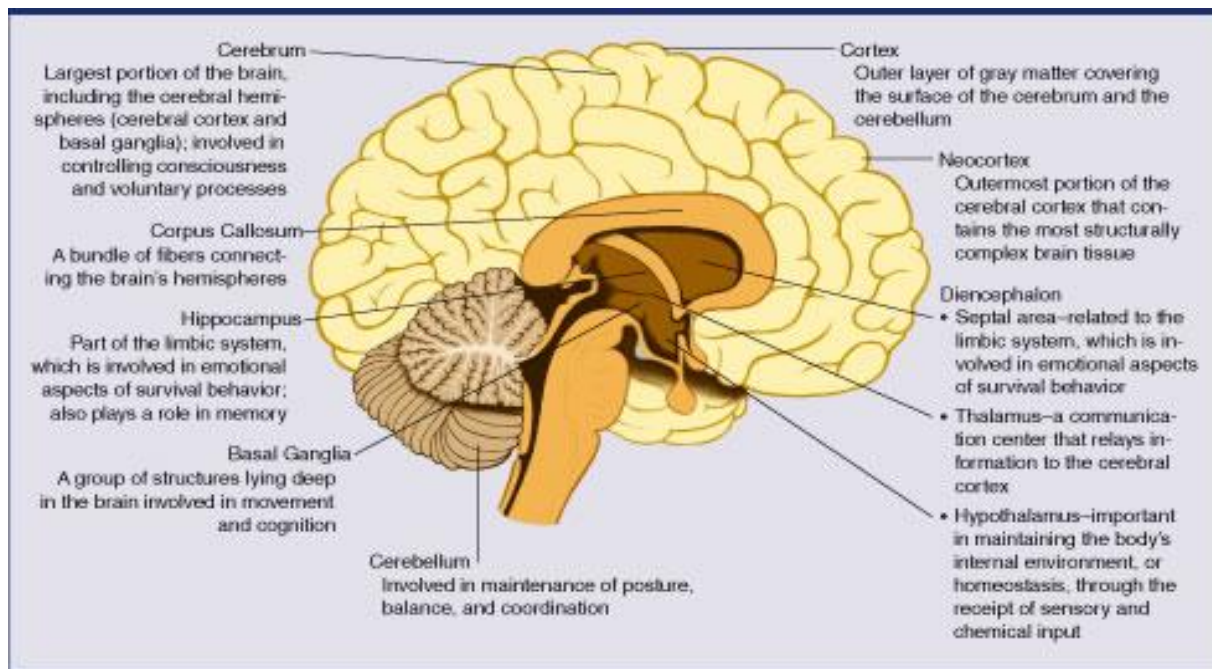




Aspects of Drug and Alcohol Use

This course (or, ideally, lecture series) can be tailored to middle or high school students, or adult learners. The short and long term effects of drug and alcohol use on various body systems are discussed.

The series not only focuses on physical effects, but emphasizes psychological and social aspects of substance abuse and other addictive behaviors.



This is a non- AHA course. Topics covered are taught by experienced, knowledgeable Registered Nurses. Please contact us for pricing and course content details. Certificate of Participation is provided.

www.CarpenterCPRsolutions.com